

Face Detection Setup

Document ID: I03B0509

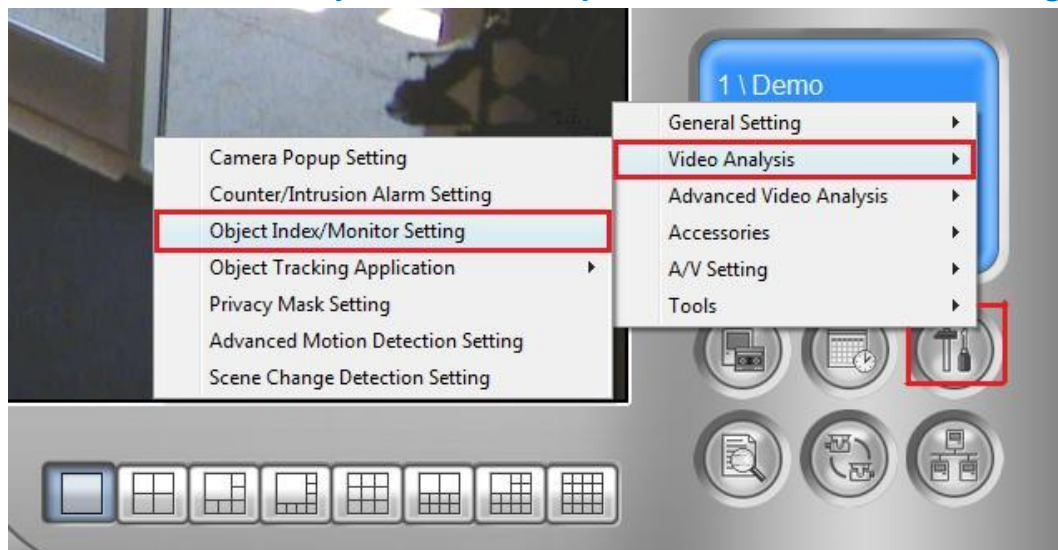
Objectives:

Video Analytics: Face Detection Setup

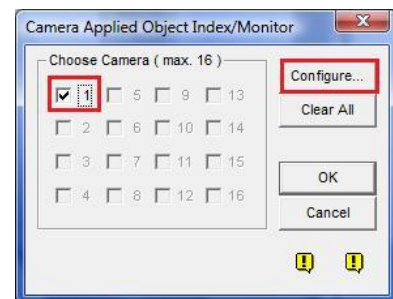
Applicable Multicam version: v8.0 and above

Video Analytics: Face Detection Setup

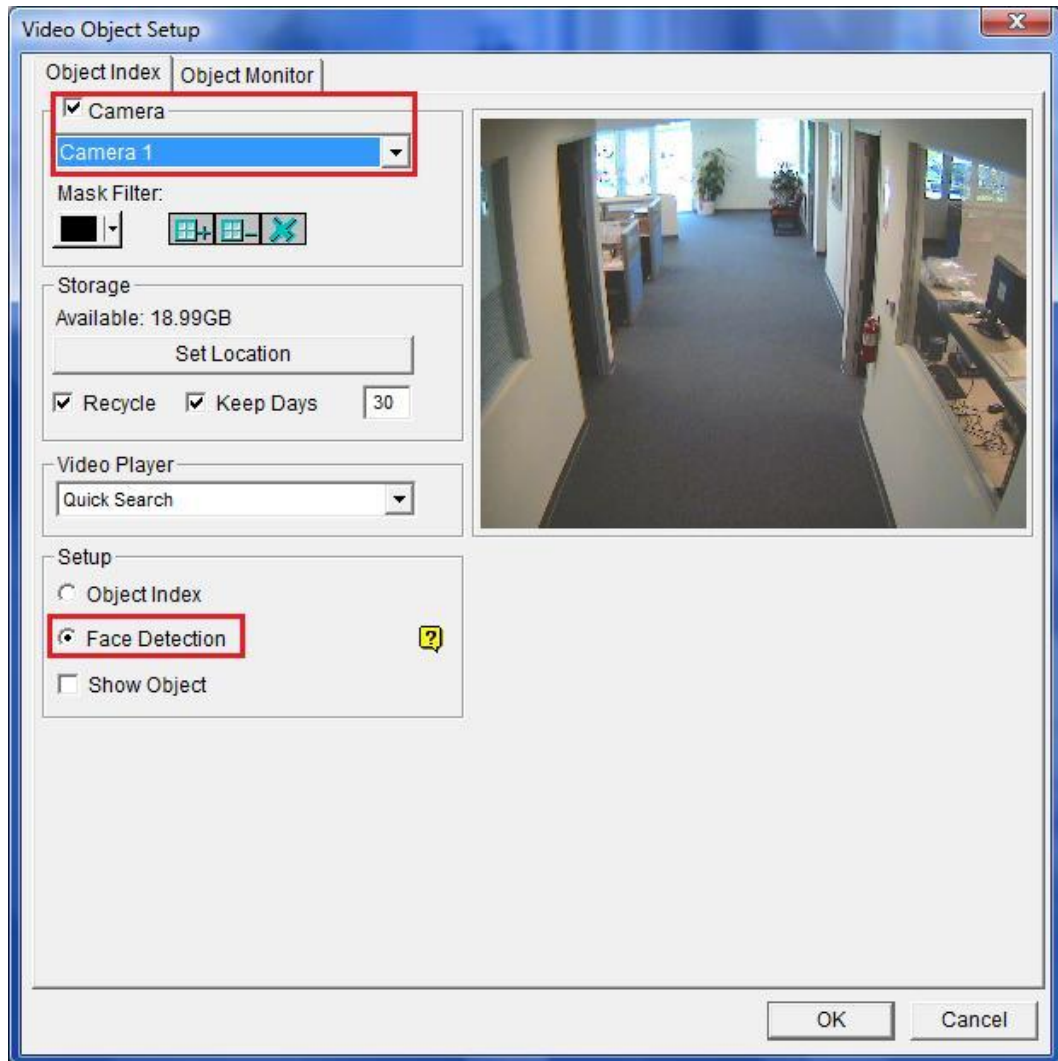
1. In GeoVision Multicam software, click on **Configure** button, select **Video Analysis**, then **Object Index/Monitor Setting**



2. Select the camera(s) which Face Detection is to be applied, then select **Configure**



3. Under Object Index tab, enable Face Detection by placing a check by Camera. Then, select the camera number from the drop-down list. Select **Face Detection** under Setup box then click **OK** to finish setup



- ✓ For better face detection accuracy, it is recommended to zoom in the camera to allow faces to occupy at least 1/10 of the camera screen

4. Once setup is finished, click on [View Log](#) button and select [Live Object Index](#) to view recorded facial images once system starts monitoring

